

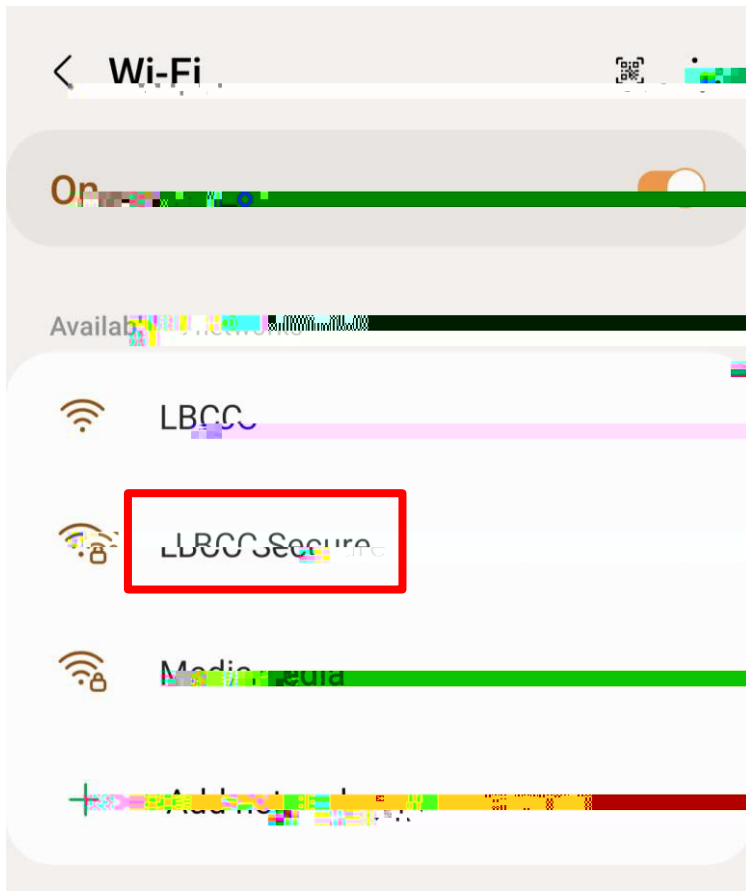


FOR LONG BEACH CITY COLLEGE

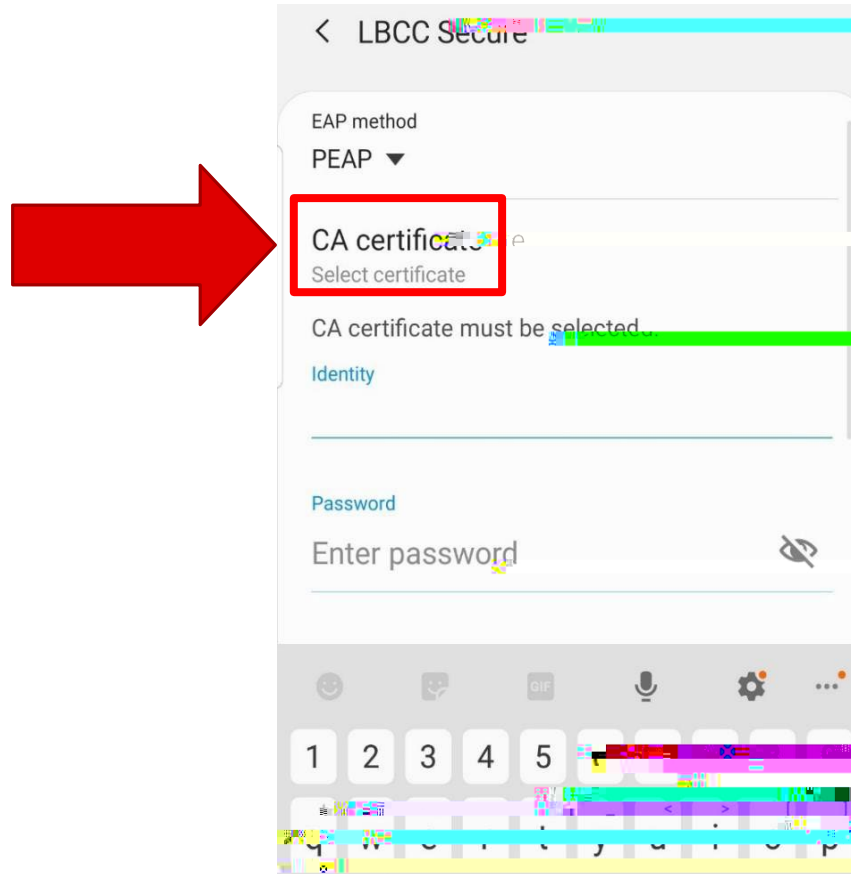
# Connect to Wi-Fi networks on your Android device

When you have Wi-Fi turned on, your device automatically connects to nearby Wi-Fi networks you have connected to before.

1. Open your device's Settings app.
2. Tap Network & internet Wi-Fi.
3. Turn on Wi-Fi.
4. Tap a listed network. If it needs a password, you'll see the Lock.
5. After you connect: **Connected** will show under the network name.
6. When your device is near and Wi-Fi is on, your device automatically connects to LBCC Secure.

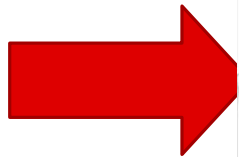


Click on 'LBCC Secure'



Leave default EAP method on PEAP and click CA Certificate

# Don't validate



< LBCC Sec

EAP method  
PEAP

Select certificate

HS2 130

Don't validate

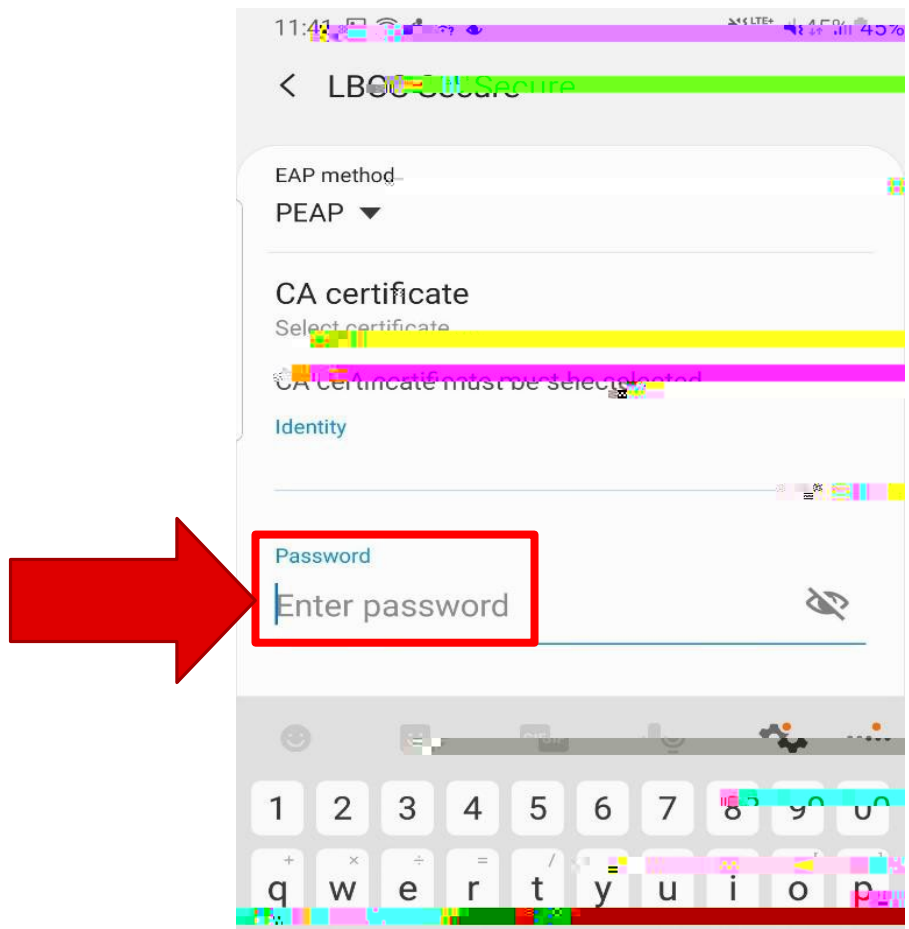
Password

Enter pass

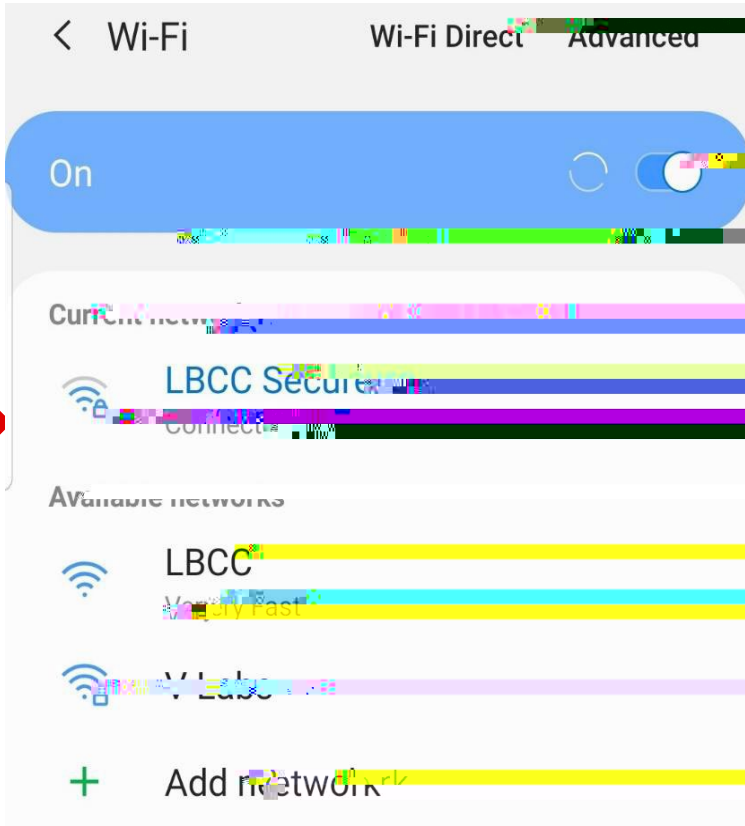
Click on



Put in



Put your LBCC Password in the Password field.



You should now be connected to LBCC Secure.



FOR LONG BEACH CITY COLLEGE